



Expedia Group (EG) compliance via API launch kit

Q4 2022



What's included



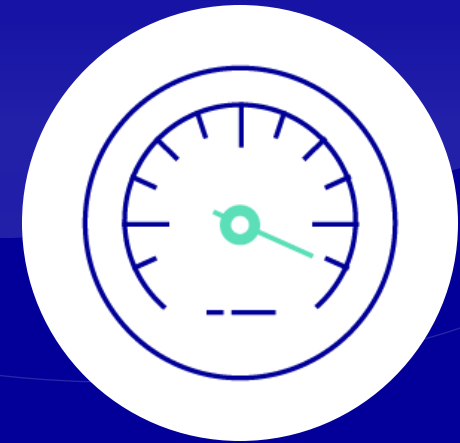
Overview

Discover the functionality and goals of EG compliance via API



Benefits

Learn about the key benefits for you and your lodging partners



Getting Started

Discuss integration next steps, including certification details

We are helping to simplify & streamline the EG compliance process



We understand the scale and impact that the EG compliance process has on listings and have created an integration to help you address many issues within the current landscape

25%

Over 25% of EG listings (and growing!) must understand and follow EG requirements to remain live on EG site

125

Currently, there are over 125 regulatory configurations across over 15 countries (and growing!), so the EG landscape is large and intricate

The new **EG compliance via API...**

HELPS MANAGE COMPLEXITY AND PROVIDE VISIBILITY TO EG REGULATORY INFORMATION*

*The guidance we provide is meant to aid in determining what EG requirements are for properties. There may be other requirements that your property needs to meet. It is your responsibility to ensure you meet all necessary regulatory requirements for your properties. We recommend checking local government websites to confirm all the requirements your property needs to meet. Current product does not support Ireland, Spain, and Japan jurisdictions.

Source: EG Regulatory 2021 Summary

Functionality

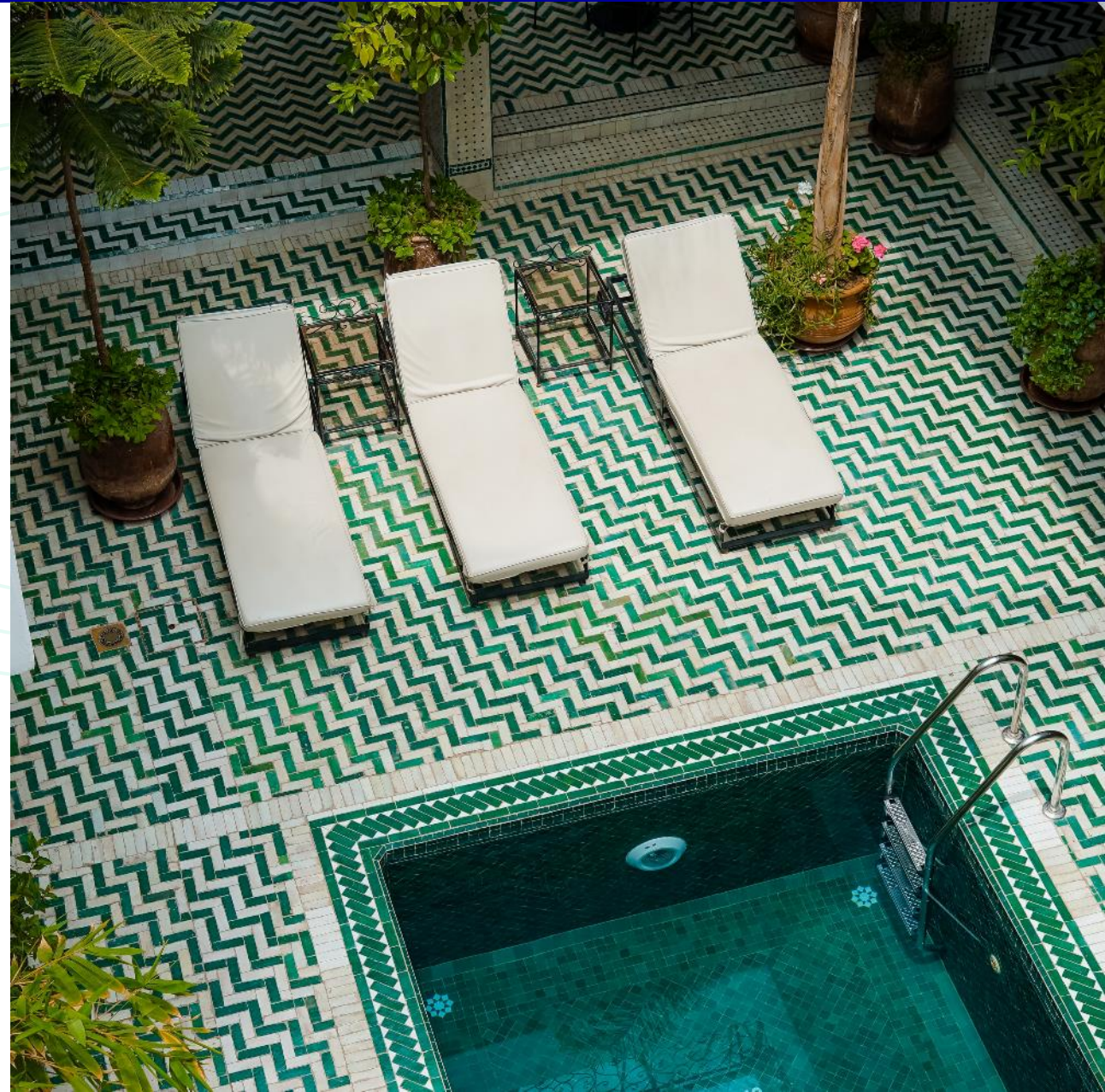
Lodging partners will be able to retrieve and manage EG regulatory information by jurisdiction within software.

Goals

1. **Manage** EG regulatory information in one place within software for a given property or jurisdiction**
2. **Provide real time* EG requirements** for a given property or jurisdiction**
3. **Assist in validating status** against EG requirements automatically
4. **Increase operational efficiency** by streamlining and enhancing the EG onboarding process

*Data source is contacted every instance a query is completed via API

**Current product does not support Japan jurisdiction





Improve clarity and reduce delists

Provide lodging partners a single point to view and manage EG regulatory information. This visibility can help reduce the number of delisted properties.



Increase operational efficiency

Increase operational efficiency by removing multi-layer complexity and replacing with a single point to help manage all EG requirements within software.



Enhance onboarding process

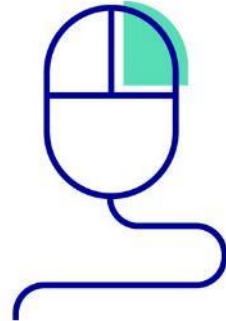
Reduce the time to go-live by allowing lodging partners to manage regulatory registration information in real-time.

How EG compliance via API provides value to you



Simplify with a single solution

Provide a single solution within your software that helps simplify EG requirements for lodging partners.



Improved software stickiness

Strengthen relationship with existing lodging partners and show immediate value with new lodging partners by offering this solution.

Review the compliance via API integration documentation

If you have read the documentation and are ready to continue, reach out to your account manager to discuss next steps.

Test the integration

Once development is completed, we will provide you with a test plan and property to ensure everything is working as expected. Our integration team will support you with any challenges or questions.

Go Live

Once you have been certified by our integration teams, you are ready to release this functionality into production. Communicate with your properties so they know to take advantage of this new capability!



expedia group™